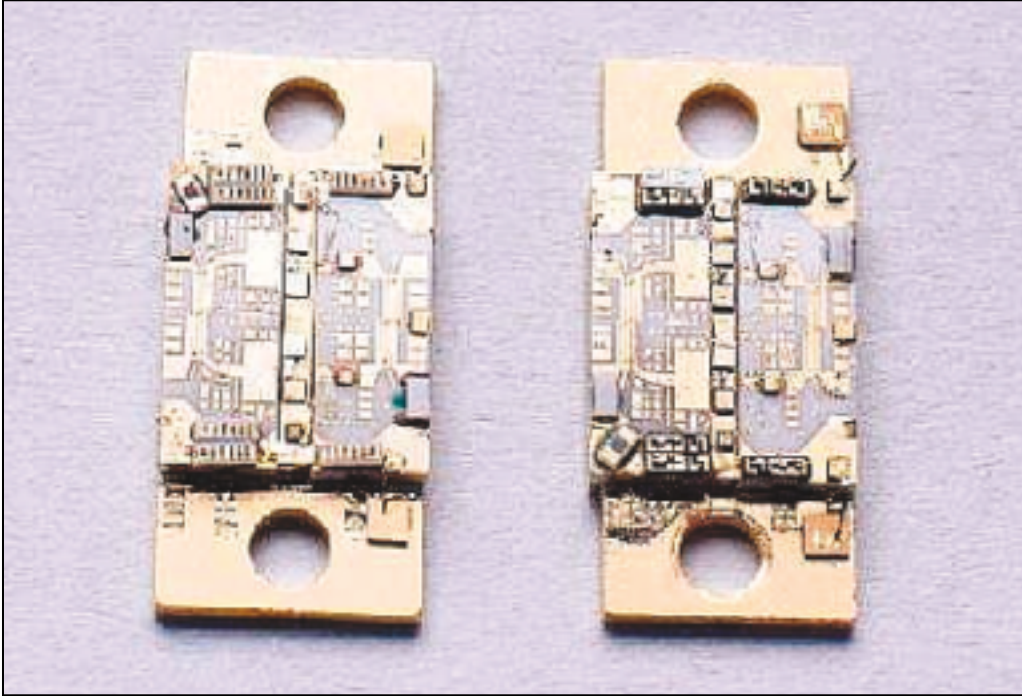




BROADBAND AMPLIFIER MODULES



FEATURES

- Quasi MMICs Balanced Amplifier Modules
- 6 - 18 GHz Frequency
- Harmonics Suppression
- Low Junction Temperature
- High Reliability

PACKAGING

- ESD Protected Containers
- Eutectic Die Attach

APPLICATIONS

- Instrumentation
- Commercial Communications
- ECM
- ECCM

Nanowave Technologies Inc.

425 Horner Avenue, Etobicoke, Ontario M8W 4W3 Canada

Tel: 416.252.5602 | Fax: 416.252.7077 | www.nanowavetech.com

QM SERIES, QUASI-MMIC, 6.0 - 18 GHz, BALANCED AMPLIFIER MODULE

PARAMETERS	UNITS	TYPICAL
SSG Variation over Temperature	dB/dB \backslash °C	-0.0017
P1dB Variation over Temperature	dB/ \backslash °C	-0.010
Third Order Intercept Point	dBm	P1dB + 9.0
Second Harmonic at Pout = P1dB	dBc	-20.0
Reverse Isolation	dB	-20.0

Module Outline: L & R.

General features: @ 25°C case temperature.

High power FETs brazed on copper ribs over thermkon carriers for best thermal management.

100% screening and testing. Test data supplied with all shipments.

Modules packaged in ESD protected containers.

Gain flatness can be optionally improved.

QUASI-MMIC BALANCED, 6.0 - 18.0 GHz, TEMPERATURE COMPENSATION MODULE

PARAMETERS	UNITS	MINIMUM	TYPICAL	MAXIMUM
Insertion Loss @ No Attenuation	dB		2.0	3.0
Maximum Attenuation	dB		12.0	
Insertion Loss Flatness over Frequency at all Attenuation Levels	dB		\pm 0.5	\pm 1.0
Input/Output VSWR	-		1.8:1	2.0:1
Input Voltage	V	5.0	8.0	10.0
Input Current	mA		12.0	20.0

• Module Outline: L & R.

• General features: @ 25°C case temperature.

Specifications are subject to change without notification. Consult Nanowave Technologies, Inc. for specific applications/requirements.